

# AIRFORCE UNIVERSITY

## TAFAWA-BALEWA BAUCHI STATE



**NEXT7**

7, Abagbon Odeku Street - Victoria Island - LAGOS  
FEDERAL REPUBLIC OF NIGERIA  
tel. +234 09019706302 / 0809221112  
info@nextpj.com  
www.nextpj.com

**DIREMA**

**P.I.E.C.O**

IrideWEB

**3D**  
3D STUDIO

**made in**  
moad architecture design engineering integrated



NEXT

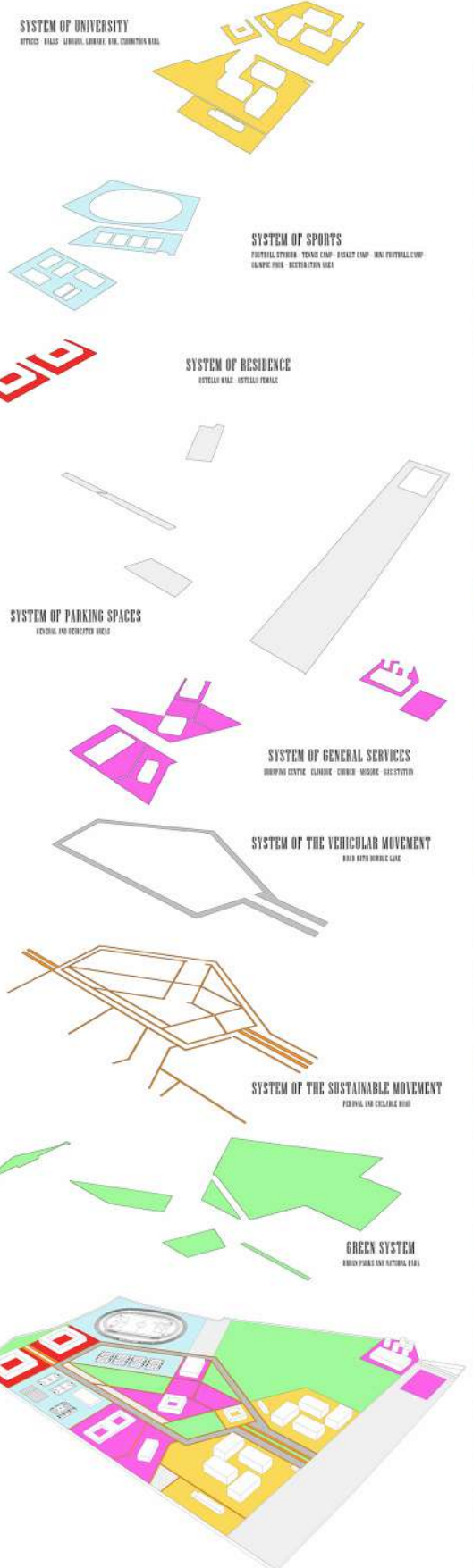
# AIRFORCE UNIVERSITY

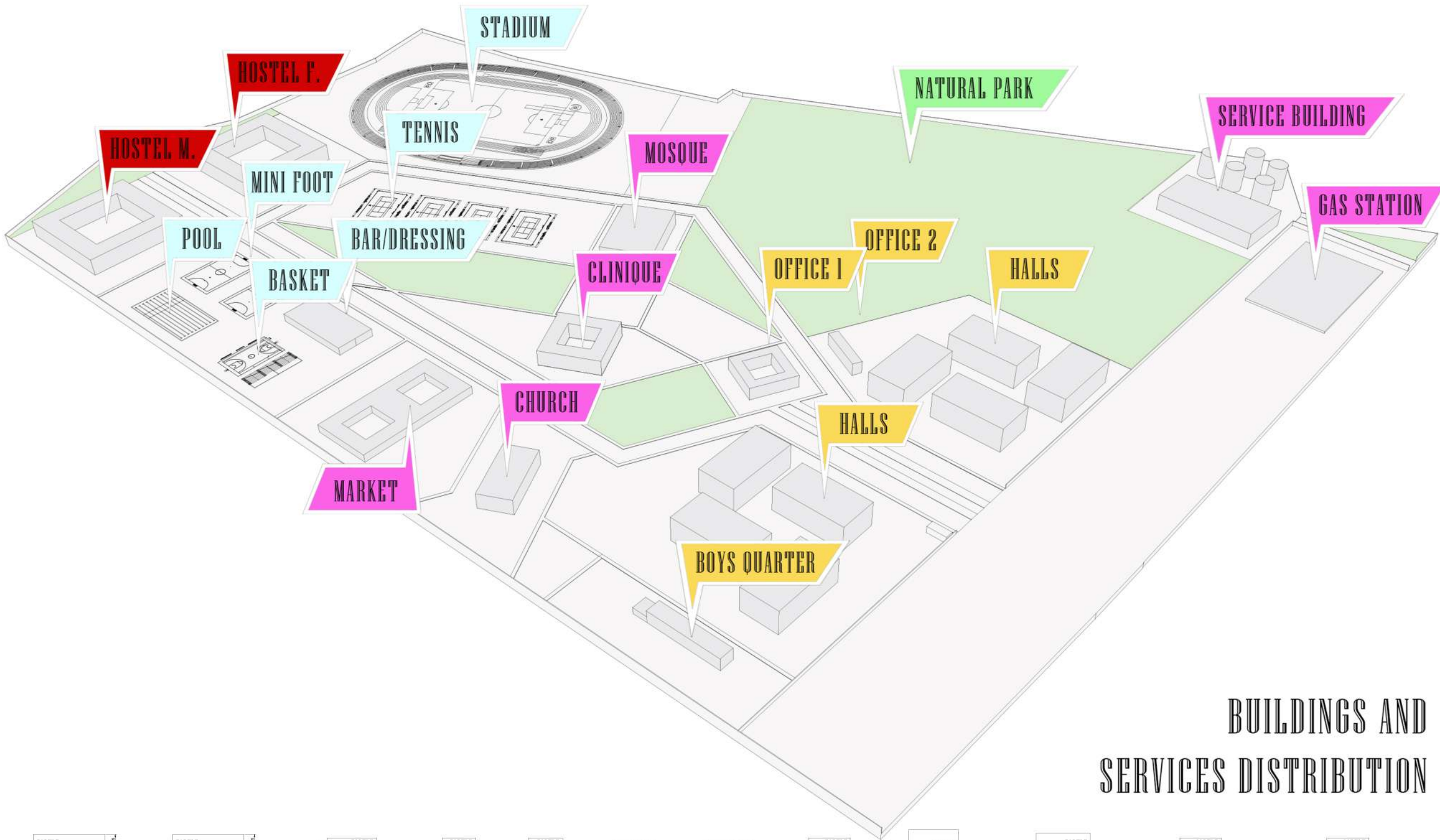
## TAFAWA-BALEWA BAUCHI STATE

# MASTER PLAN

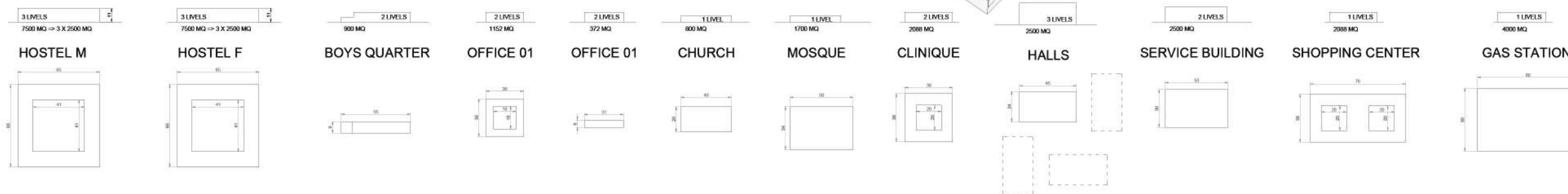


7, Abagbon Odeku Street - Victoria Island - LAGOS  
FEDERAL REPUBLIC OF NIGERIA  
tel. +234 09019706302 / 08092211112  
info@nextpj.com  
www.nextpj.com





## BUILDINGS AND SERVICES DISTRIBUTION



# AIRFORCE UNIVERSITY

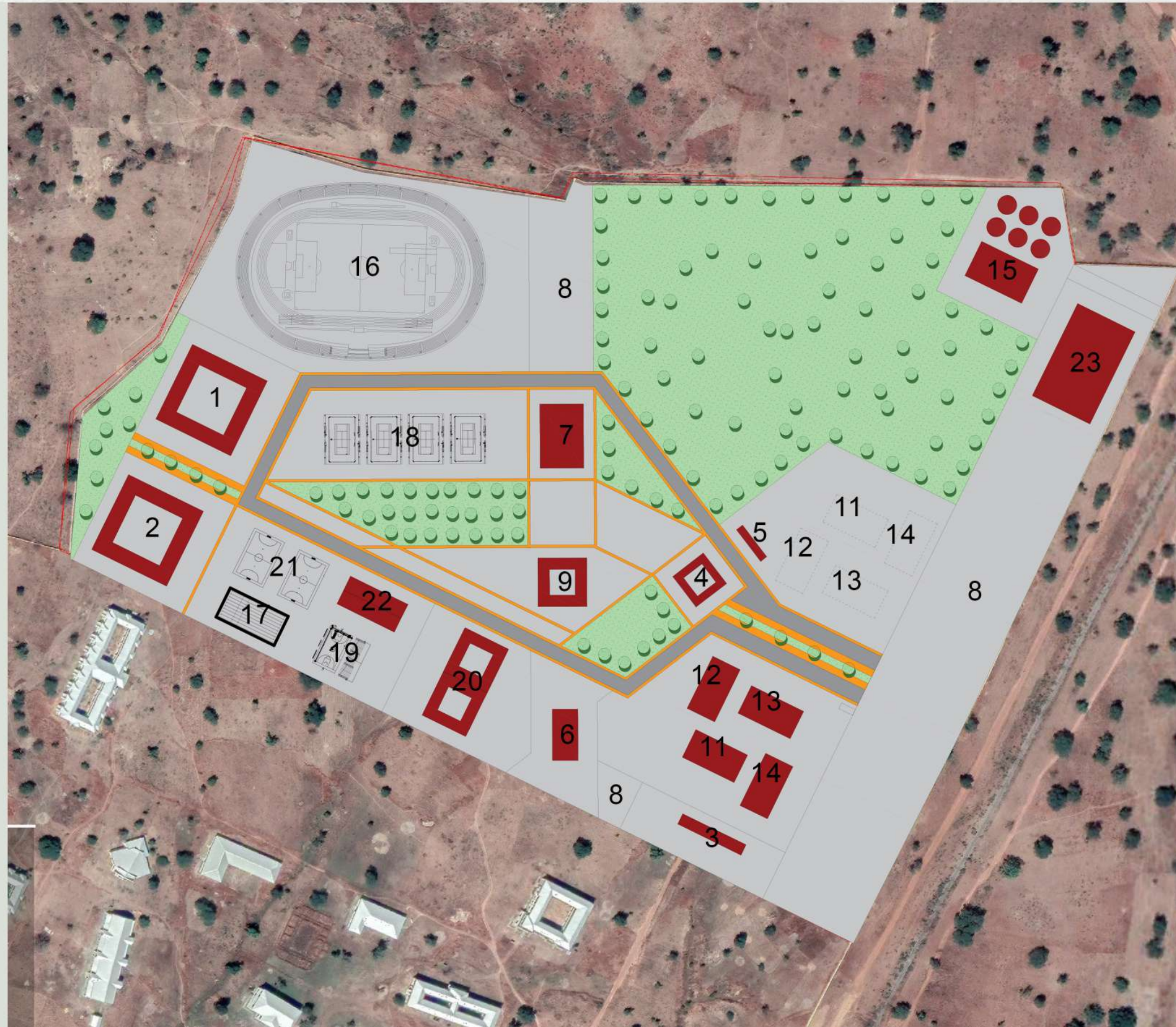
## TAFAWA-BALEWA BAUCHI STATE

# MASTER PLAN

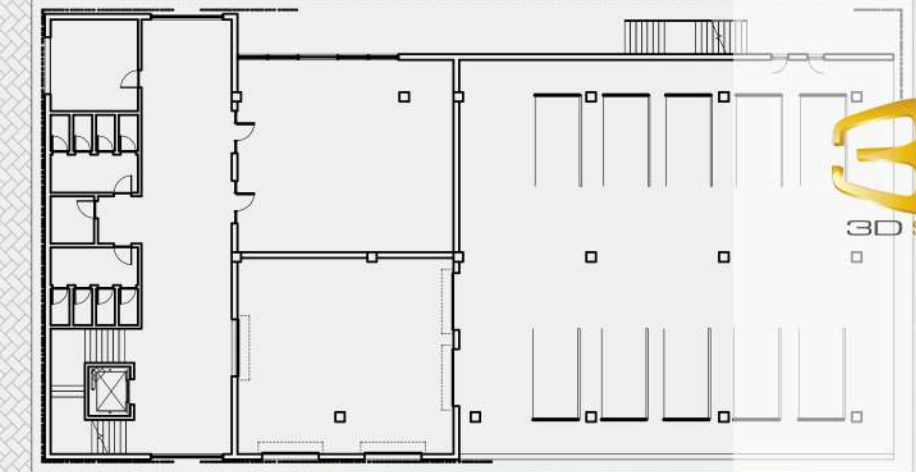
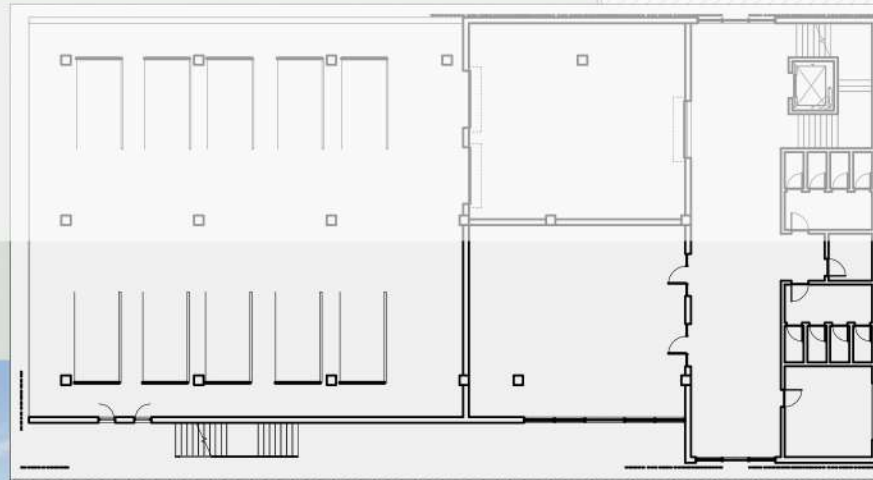


7, Abagbon Odeku Street - Victoria Island - LAGOS  
 FEDERAL REPUBLIC OF NIGERIA  
 tel. +234 09019706302 / 0809221112  
 info@nextpj.com  
 www.nextpj.com

General information		
tag	Building	sqm
1	Hostel male 4 types of rooms; 50 single rooms with bathroom (9+4m2), 125 double rooms with bathroom (14+4m2), 75 rooms for 4 beds with bathroom (20+4m2), 50 rooms for 8 people (26+4m2) complete with kitchen, dining room, laundry room, bathroom living area+office. Walking surface 1000m2	7500
2	Hostel female 4 types of rooms; 50 single rooms with bathroom (9+4m2), 125 double rooms with bathroom (14+4m2), 75 rooms for 4 beds with bathroom (20+4m2), 50 rooms for 8 people (26+4m2) complete with kitchen, dining room, laundry room, bathroom living area+office. Walking surface 1000m2	7500
3	B.Q. 52 single with bathroom (9+4m2) complete with kitchen, with dining room, laundry room, bathroom, living area and office. Walking surface 200m2.	900
4	Office 1 (academy staff) 240 people from 3 smq/person complete with bathroom, dining area, meeting room, archive space. Walking surface 720 smq of offices, 200 smq bathrooms, 60 smq meeting room, 100 smq archive space and 60 smq dining area.	1140
5	Office 2 (admin) 50 people from 3 smq/person complete with bathroom, dining area, meeting room, archive space. Walking surface of 150 smq offices, 40 smq bathrooms, 40 smq meeting room, 100 smq archive space and 40 smq dining area.	370
6	Church 600 people 1,5sqm, with altar, choir area, bathrooms 100sqm, office 50sqm	800
7	Mosque 700 men + 400 women 1,5sqm, large and illuminated prayer area, soundproofing will allow peace and quiet at harvest time, washing and preparation area, tea area, library, bathrooms 100sqm, office 50sqm.	1700
8	Car Park 150 machines for admin staff ( 3000m2)+150 machines for school staff ( 3000m2) + 1000 machines for users ( 20000m2)	26000
9	Clinic 10 inpatient rooms with bathroom 20sqm, 3 studio of 50sqm, 5 surgeries of 30sqm, reception of 30sqm, waiting room 50sqm, archive area 100sqm, storage of medicines 100sqm and kitchen and canteen area 100sqm.	2000
10	Urbanization area Light, Cable Duct, pipe water, west water, FF SINGLE BLOCK 45X24 => 1080 SQM Under the main classroom: Covered parking for n.10 cars 23x21 of 483 sqm; Technical room to be used for (panel room/ac) of 117 sqm Activity room (Bar- library/library/studio/exhibition room) on two levels (ground+first) of 117+117 sq.m. totally 234 sq.m. With entrance from the stairwell: Ground floor: Stairs and elevator; 4+4 wc + store; Concierge/security; Common area. First floor: N.3 offices N.1 master office + secretary office N.2 stores N. 1 small classroom for 50 seats =>	90.000
11	School typical 1 See point 11 solo se progettato punto	2500
12	School typical 2 See point 11 solo se progettato punto	2500
13	School typical 3 See point 11 solo se progettato punto	2500
14	School typical 4 See point 11 solo se progettato punto	2500
15	Service Building Water treatment, sewerage treatment, generator house and power plant, FF system	2500
16	Football stadium + athletics Football field (18000m2), dressing room, stands, office, recreation area (600m2)	2400
17	Swimming pool 1 outdoor swimming pool 21x25 h1.8 (525m2)+ dressing room + stands + office + recreation area (300m2)	825
18	Tennis camps 4 Fields (800m2)+ dressing room + stands + office + recreation area (500m2)	3600
19	Basket camps 1 Field (660m2)+ changing room + stands + office + recreation area (300m2)	950
20	Market 30 shops (60m2) + common areas 10% of total shops + 5 bathrooms (20m2)	2200
21	Football field	
22	Recreational zone sports area	
23	Gas station	



# AIRFORCE UNIVERSITY TAPAWA-BALEWA BAUCHI STATE



## HALLS BUILDINGS

## GROUND FLOOR

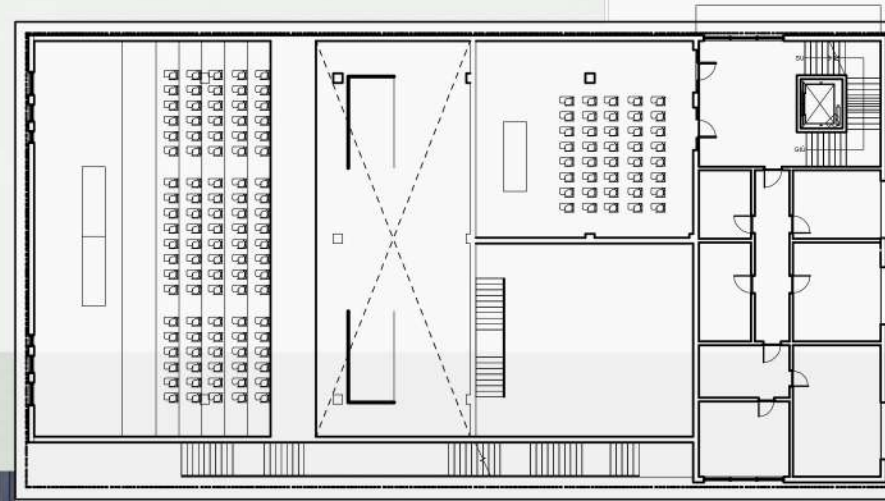


**NEXT7**

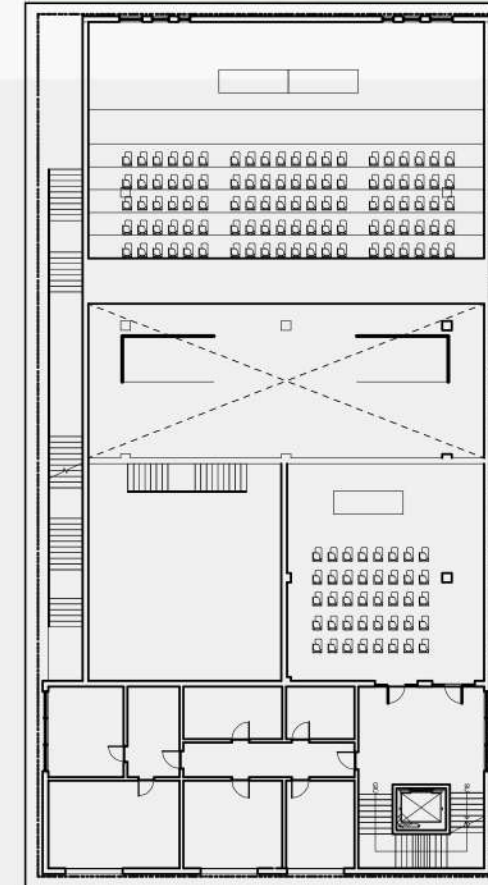
7, Abagbon Odeku Street - Victoria Island - LAGOS  
FEDERAL REPUBLIC OF NIGERIA  
tel. +234 09019706302 / 0809221112  
info@nextpj.com  
www.nextpj.com



# AIRFORCE UNIVERSITY TAPAWA-BALEWA BAUCHI STATE



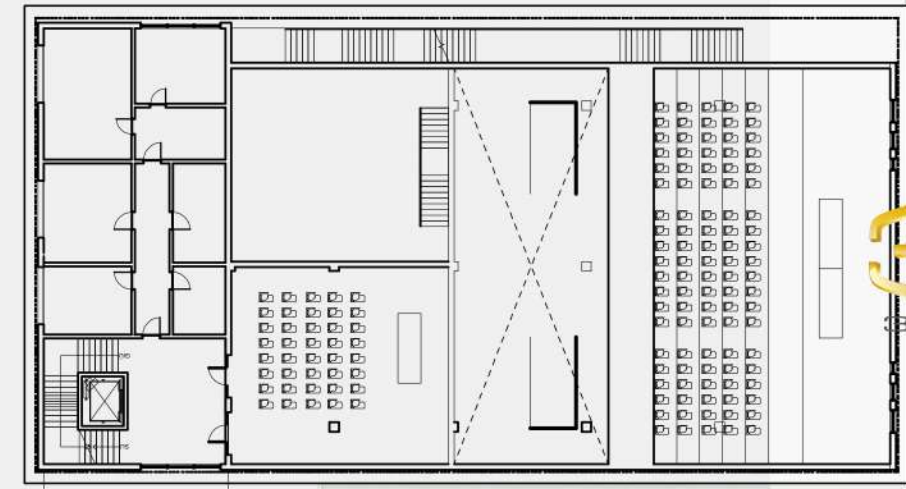
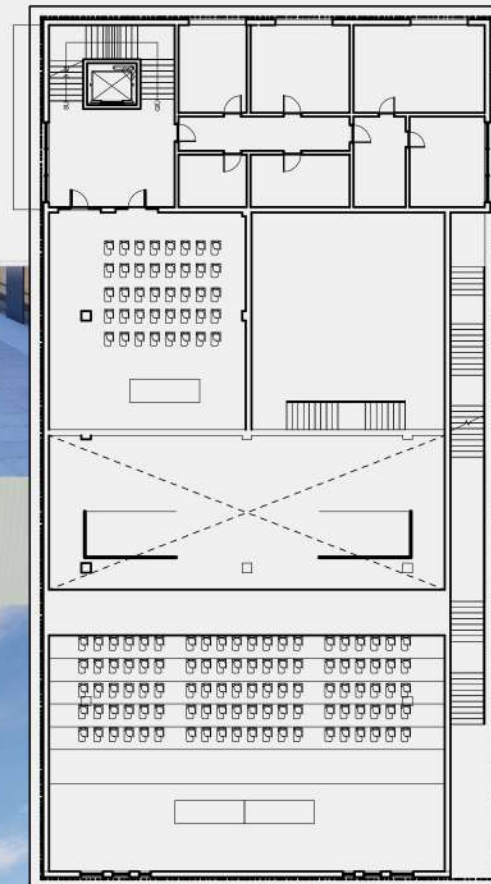
## HALLS BUILDINGS



7, Abagbon Odeku Street - Victoria Island - LAGOS  
FEDERAL REPUBLIC OF NIGERIA  
tel. +234 09019706302 / 08092211112  
info@nextpj.com  
www.nextpj.com



VIEW 03

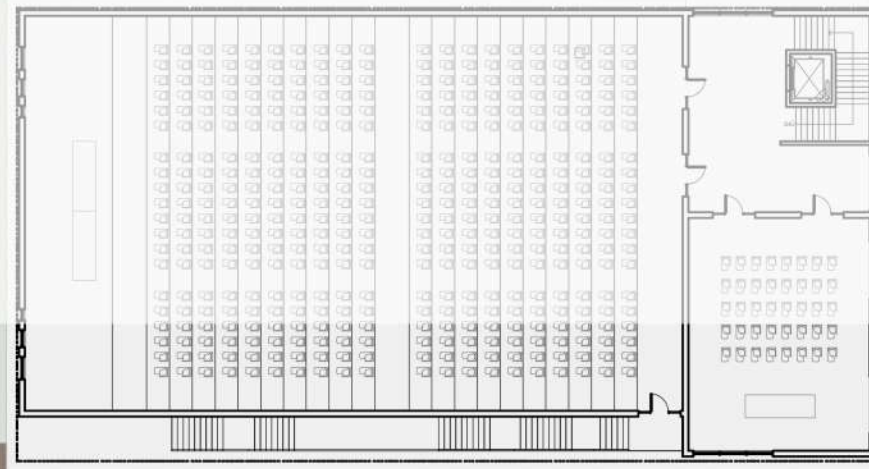


VIEW 04

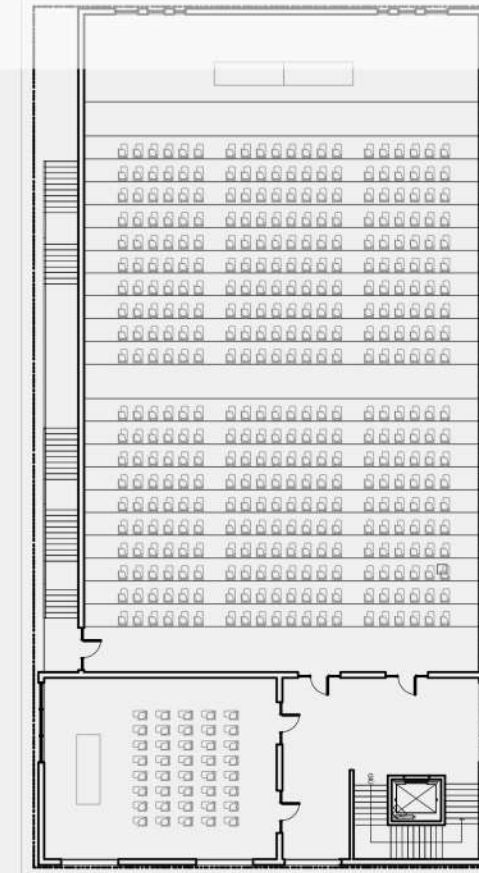
## FIRST FLOOR



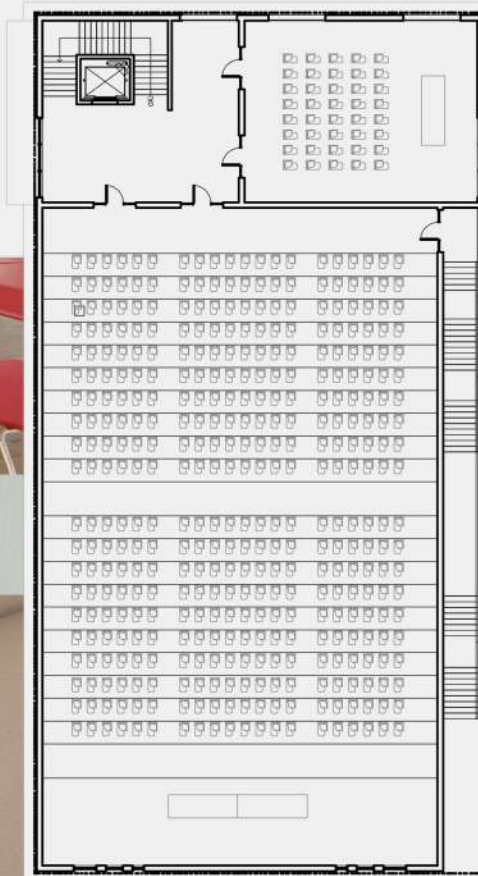
# AIRFORCE UNIVERSITY TAPAWA-BALEWA BAUCHI STATE



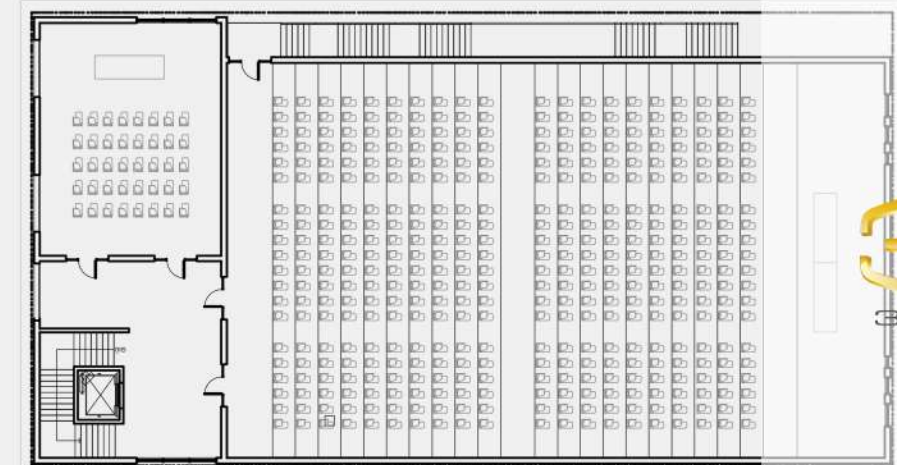
## HALLS BUILDINGS



7, Abagbon Odeku Street - Victoria Island - LAGOS  
FEDERAL REPUBLIC OF NIGERIA  
tel. +234 09019706302 / 0809221112  
info@nextpj.com  
www.nextpj.com



## SECOND FLOOR





# AIRFORCE UNIVERSITY

TAFAWA-BALEWA BAUCHI STATE

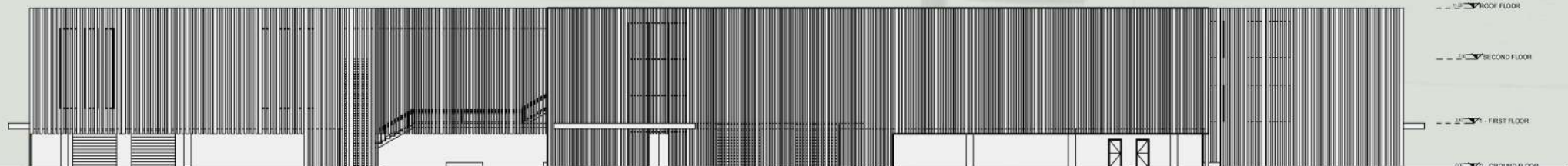
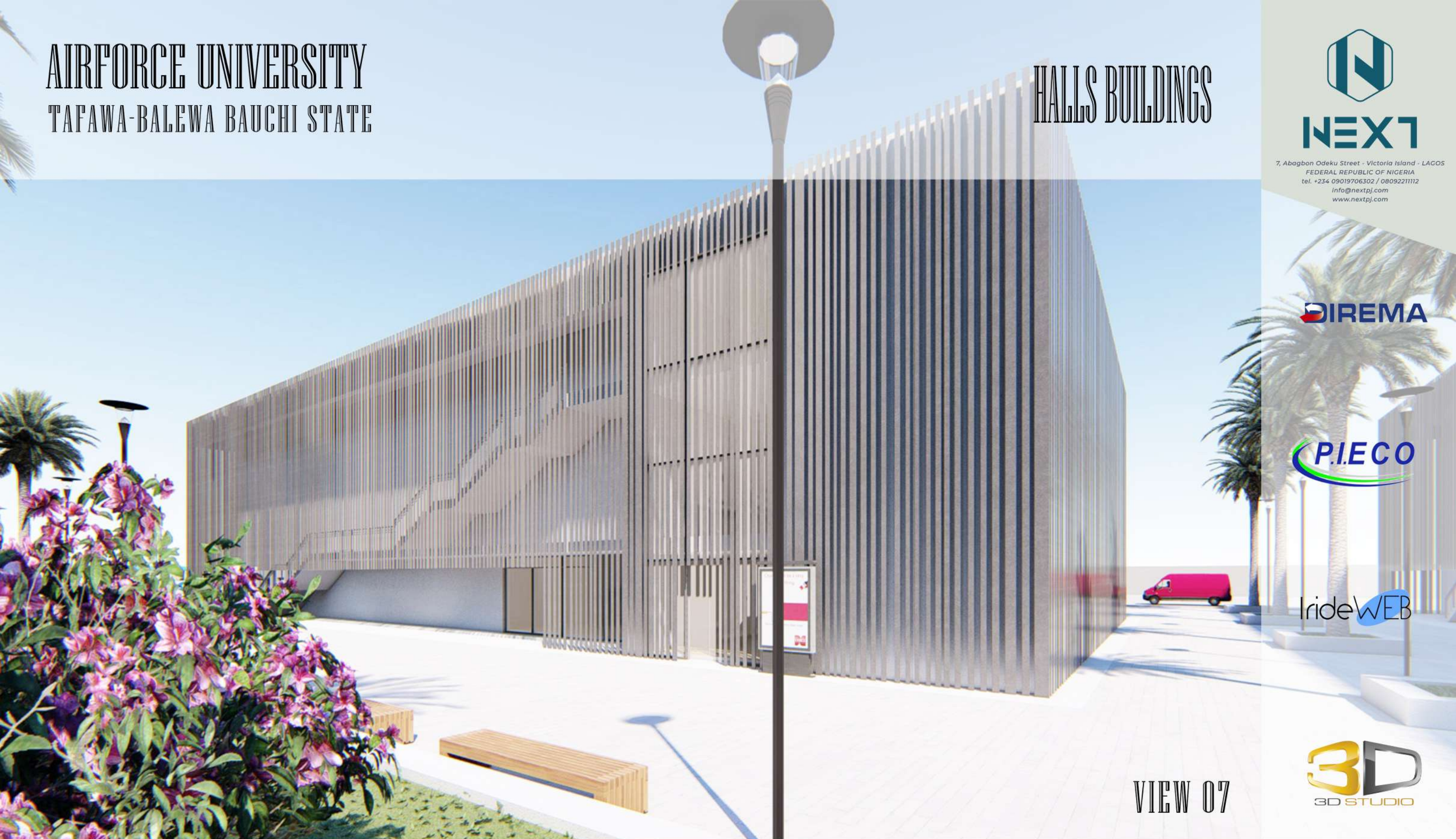
# HALLS BUILDINGS



7, Abagbon Odeku Street - Victoria Island - LAGOS  
FEDERAL REPUBLIC OF NIGERIA  
tel. +234 09019706302 / 0809221112  
info@nextpj.com  
www.nextpj.com



VIEW 07



--- 12'0" ROOF FLOOR  
--- 2'0" SECOND FLOOR  
--- 2'0" FIRST FLOOR  
--- 0'0" GRADE FLOOR

FRONT VIEW



# AIRFORCE UNIVERSITY TAFAWA-BALEWA BAUCHI STATE

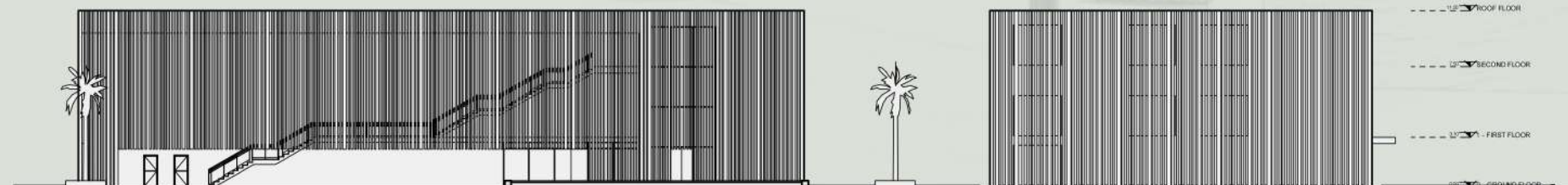
# HALLS BUILDINGS



7, Abagbon Odeku Street - Victoria Island - LAGOS  
FEDERAL REPUBLIC OF NIGERIA  
tel. +234 09019706302 / 0809221112  
info@nextpj.com  
www.nextpj.com



VIEW 08



VIEW FROM SQUARE



# AIRFORCE UNIVERSITY TAFAWA-BALEWA BAUCHI STATE

# HALLS BUILDINGS



## NEXT7

7, Abagbon Odeku Street - Victoria Island - LAGOS  
FEDERAL REPUBLIC OF NIGERIA  
tel. +234 09019706302 / 0809221112  
info@nextpj.com  
www.nextpj.com

## DIREMA

## P.I.E.C.O

## IrideWEB

## 3D 3D STUDIO



VIEW 09



--- 21'0" ROOF FLOOR  
--- 21'0" SECOND FLOOR  
--- 21'0" FIRST FLOOR  
--- 21'0" GROUND FLOOR

# SECTION VIEW

## made in

made architecture design engineering integrated

# AIRFORCE UNIVERSITY TAPAWA-BALEWA BAUCHI STATE

# HALLS BUILDINGS



7, Abagbon Odeku Street - Victoria Island - LAGOS  
FEDERAL REPUBLIC OF NIGERIA  
tel. +234 09019706302 / 08092211112  
info@nextpj.com  
www.nextpj.com



VIEW 10



--- 12'0" ROOF FLOOR  
--- 2'0" SECOND FLOOR  
--- 2'0" FIRST FLOOR  
--- 0'0" FINISH FLOOR

SECTION VIEW



# AIRFORCE UNIVERSITY

TAFAWA-BALEWA BAUCHI STATE

# HALLS BUILDINGS



7, Abagbon Odeku Street - Victoria Island - LAGOS  
FEDERAL REPUBLIC OF NIGERIA  
tel. +234 09019706302 / 0809221112  
info@nextpj.com  
www.nextpj.com



# GENERAL SQUARE VIEW

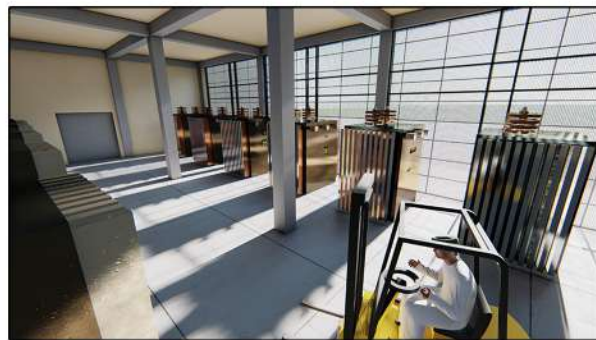
# AIRFORCE UNIVERSITY

TAFAWA-BALEWA BAUCHI STATE

# SERVICE BUILDING



7, Abagbon Odeku Street - Victoria Island - LAGOS  
FEDERAL REPUBLIC OF NIGERIA  
tel. +234 09019706302 / 0809221112  
info@nextpj.com  
www.nextpj.com



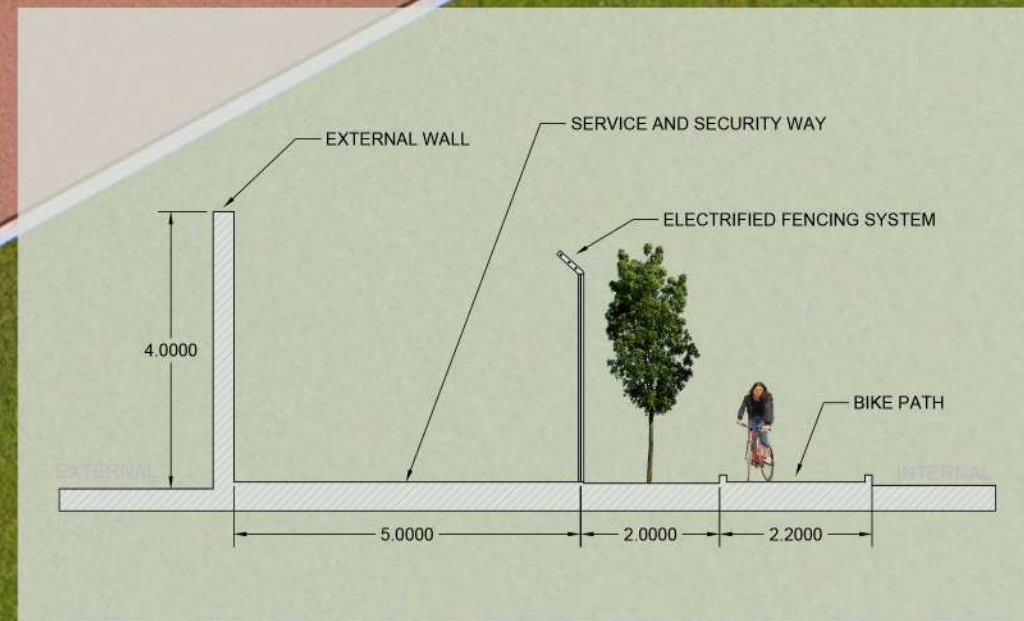
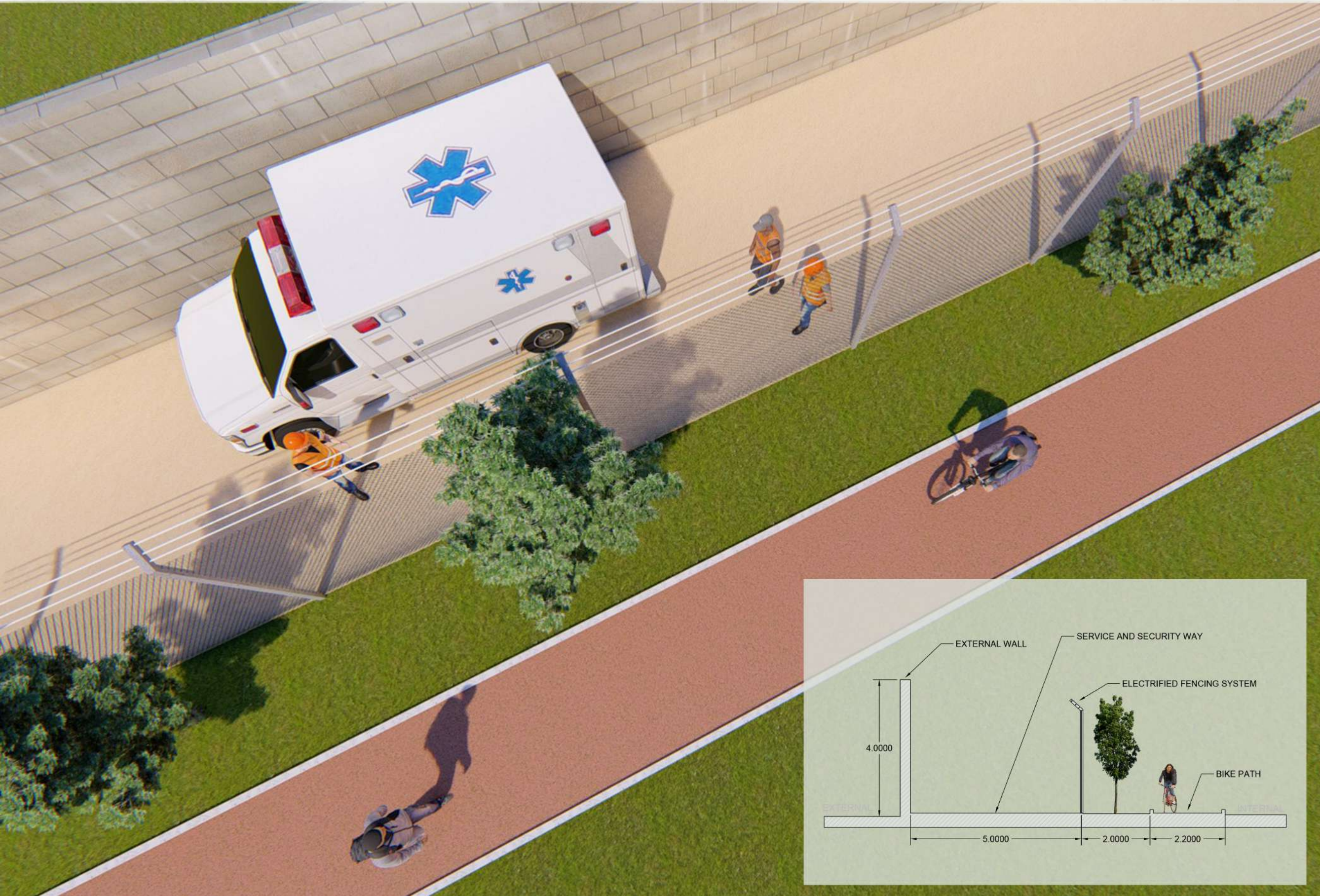
WEST FRONT VIEW

# AIRFORCE UNIVERSITY TAFAWA-BALEWA BAUCHI STATE

# SECURITY FENCING SYSTEM



7, Abagbon Odeku Street - Victoria Island - LAGOS  
FEDERAL REPUBLIC OF NIGERIA  
tel. +234 09019706302 / 0809221112  
info@nextpj.com  
www.nextpj.com



# AIRFORCE UNIVERSITY

TAFAWA-BALEWA BAUCHI STATE

# SECURITY FENCING SYSTEM



7, Abagbon Odeku Street - Victoria Island - LAGOS  
FEDERAL REPUBLIC OF NIGERIA  
tel. +234 09019706302 / 08092211112  
info@nextpj.com  
www.nextpj.com





# AIRFORCE UNIVERSITY

TAFAWA-BALEWA BAUCHI STATE

# GENERAL CONCEPT



7, Abagbon Odeku Street - Victoria Island - LAGOS  
FEDERAL REPUBLIC OF NIGERIA  
tel. +234 09019706302 / 0809221112  
info@nextpj.com  
www.nextpj.com



# MOSQUE

1700 MQ - 1100 PERSONS



# AIRFORCE UNIVERSITY TAFAWA-BALEWA BAUCHI STATE

# GENERAL CONCEPT



7, Abagbon Odeku Street - Victoria Island - LAGOS  
FEDERAL REPUBLIC OF NIGERIA  
tel. +234 09019706302 / 0809221112  
info@nextpj.com  
www.nextpj.com



# CHURCH

## 800 M<sup>2</sup> - 600 PERSONS



# AIRFORCE UNIVERSITY

TAFAWA-BALEWA BAUCHI STATE

# GENERAL CONCEPT



7, Abagbon Odeku Street - Victoria Island - LAGOS  
FEDERAL REPUBLIC OF NIGERIA  
tel. +234 09019706302 / 0809221112  
info@nextpj.com  
www.nextpj.com



# HOSTEL

15000 M<sup>2</sup> - 2000 PERSONS



# AIRFORCE UNIVERSITY

TAFAWA-BALEWA BAUCHI STATE

# GENERAL CONCEPT



7, Abagbon Odeku Street - Victoria Island - LAGOS  
FEDERAL REPUBLIC OF NIGERIA  
tel. +234 09019706302 / 08092211112  
info@nextpj.com  
www.nextpj.com



# OFFICE

OF01 1140 MQ - OF02 370 MQ





NEXT



**NEXT PJ**

*7, Abagbon Street Off Adeola Odeku  
Victoria Island - LAGOS  
FEDERAL REPUBLIC OF NIGERIA  
Phone: +234 09019706302 / 08092211112  
info@nextpj.com      www.nextpj.com*