



Able to imagine the future Skilled to improve the present



NEXT

*We live in an interconnected, global and constantly evolving world. The ability to lead and manage systems, while necessary, is no longer sufficient. Success requires the availability of **real-time information, operational agility and smarter assets.***

Next PJ with its Automation & System Integration [A&SI] division and its S2PJ Application Suite project management, combines digital intelligence with engineering know-how. It helps operators, managers, manufacturers and business-people to securely monitor, manage and maintain company infrastructure assets, predict risks and give a concrete "open view" of the work.



Temp Min	21.54 C	Date	XXXX.XXXX	Customer	World
Temp High	33.94 C	Time	XXXX	Status	Work
Temp Ambient	32.13 C	Job	WPT5076	Scale	MAX

AUTOMATION

More than 50 years have passed since the birth of the “Internet” and more than 20 years since the term “Internet of Things” was coined. In recent years, **IoT technologies** have multiplied and developed, as have their numerous fields of application: **smart homes, smart buildings, smart metering, smart factories, smart cars, smart cities**, and so on to follow with **smart environment, smart agriculture, smart logistics, smart lifecycle, smart retail and smart health**. All areas made possible by the **interconnection of smart objects**.

All 'planets' belonging to the IoT galaxy.



NEXT

The technological revolution opens the door to a different cultural and organisational approach whereby the company is no longer seen as a sequence of separate, albeit highly technological, sectors, but as a single, highly integrated value chain that reacts rapidly and uniformly to the challenges imposed by the market. It is not only a question of acquiring new and more innovative technologies, but also of incorporating them into business processes which, in order to be able to use them effectively, must be manageable and controllable at all times by the company's key people.

In fact, **FACTORY 4.0** is based on a substantial requirement: the permanent interconnection of company assets and the continuous exchange of data and information between the various departments and with external suppliers.

This is the context for the convergence process between two departments that, although they share the same subject matter (IT, networks and systems), have historically and intentionally been kept separate: we are obviously referring to **IT** (Information Technology) which refers to the application of network, storage and computing resources, hardware - computers, physical servers and network equipment, software & applications and cybersecurity systems, and **OT** (Operational Technology) which refers to the technology that monitors and controls specific devices and processes within industrial workflows.

Typically, this is done through industrial control systems (**ICS**) and supervisory control and data acquisition (**SCADA**).



The digitizing process and IT/OT convergence brings together the worlds of IT and manufacturing. This requires a monitoring solution that gives teams responsible digital section an single dashboard for everything they need to know about both worlds.

Next pj

keeps monitoring simple, while ensuring performance, clarity and ease of use. This is the objective of A&SI (automation and system integration) project, an enterprise system that can meet the challenges and see the future in the eyes of its customers.

So tools like:

Sms™

[Smart Maintenance System]

A NextPj portal created for specific requirements of client, where you can log in with your own credentials and have access modules for stock, maintenance, machines and much more.

XT-lab™

a powerful tool for laboratory analysis. The new functionalities turn **XT-lab™** into an intelligent and powerful cooperation platform that connects you directly to your business. Your customised section allows you to easily run operations in minutes. Monitor your productivity, purchase materials, order parts, download documentation and access your contacts - in the office, in the field, on the road, wherever you are.

XT-truck™

A fleet geolocation system is a system that uses GPS location to monitor the activity of vehicles and fleet assets. The satellite system, which provides information on departure and discharge times, stops, current location and traffic situation, allows real-time on-line trip monitoring and management at your location.

HS2™

[H.S.S - HEALTH SOFTWARE SOLUTION] a future-oriented software solution for healthcare. A modular, scalable and interoperable "all in one" ecosystem that gives healthcare companies the ability to choose the products that best suit their needs

Point next™

Site monitoring with SCADA supervisory systems

... AND MORE



NEXT



All this and much more is



*a "Full Service Partner"
for your company.*



NEXT



A&SI

is therefore the paradigm shift from what was previously only imaginary to pure reality. Thanks to the flexible architecture and the use of PLCs and intelligent systems, A&SI enables the monitoring of locally and geographically distributed environments with a central dashboard. This is crucial when IT and OT environments are growing together. State-of-the-art automation for both production and supervision can improve and increase your productivity

4 worlds, 1 organisation

Next pj operates with a single organisation in four distinct areas of operation:

Manufacturing - Process - Menagerie & management - Operation management

Sectors that are profoundly different in terms of culture, approach and objectives, but which often share transversal technical skills and unexpected similarities of interest. The EXCHANGE OF DIFFERENT SPECIFICITIES has often proved to be the winning weapon for improving the quality of the service offered.





NEXT

Manufacturing

MACHINE AUTOMATION AND INDUSTRIAL SUPERVISION

improve workers' lives, reduce production risks, increase productivity, guarantee homogeneous product quality. in short, increase profits. From process analysis to hardware definition and software development.
from simple **PLC** programmable logic systems to more complex **SCADA** and **DCS** systems.

PROCESS AUTOMATION AND INDUSTRIAL SUPERVISION

Today, process automation is an important tool for redesigning your business, assessing its potential and improving productivity.

CIVIL AUTOMATION AND SUPERVISION

building automation at the service of safety, comfort and energy saving.
NEXT pj has extensive experience with all technologies in the world of building automation, both in the civil smart house sector and in the business and commercial sector.



NEXT

Menagerie

MANAGE AND MONITOR YOUR INFRASTRUCTURE WITH AN INTEGRATED SUITE

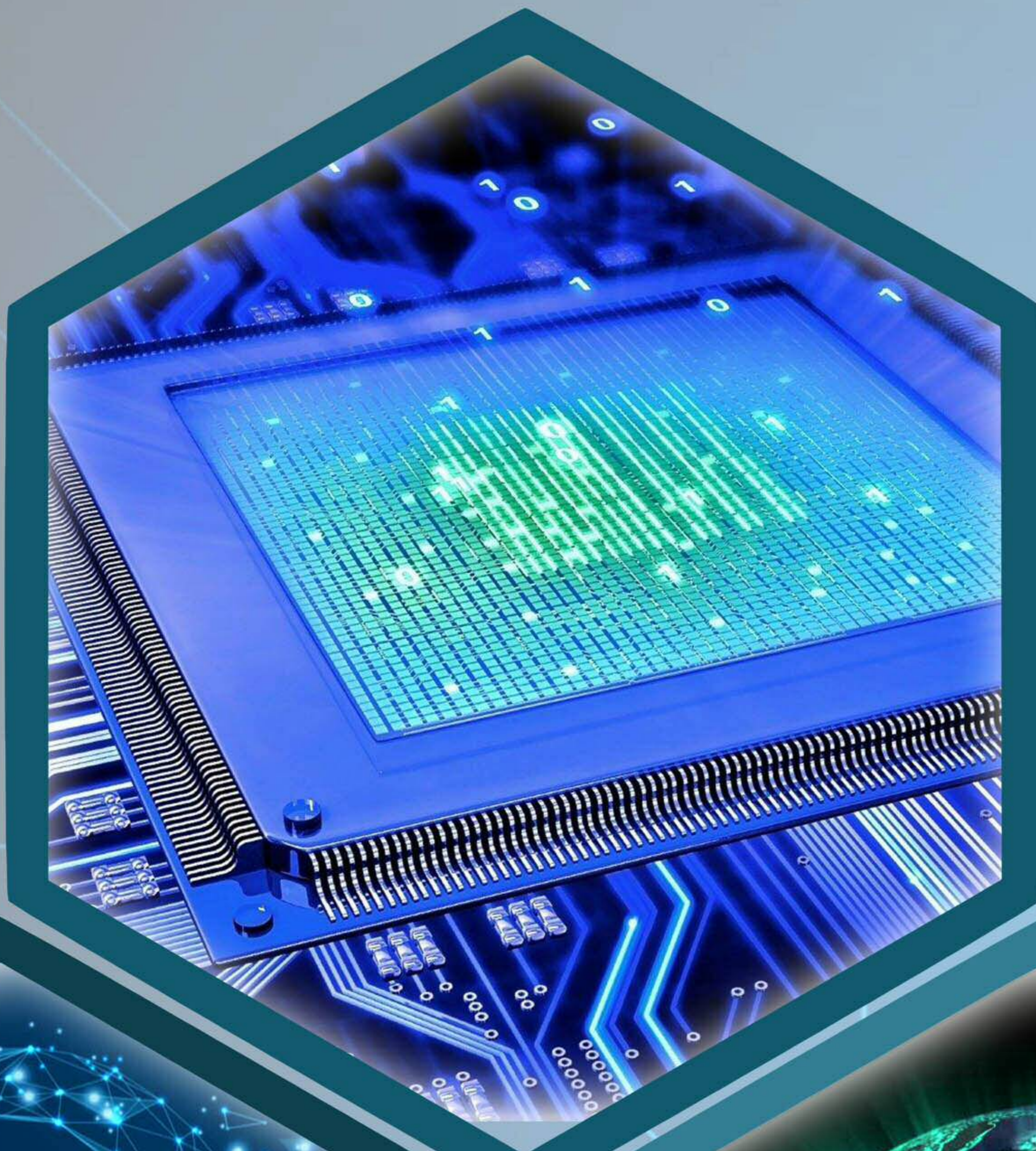
Make the most of the power of artificial intelligence (AI) and IoT to help teams make decisions in real time with visual inspection, remote monitoring, predictive maintenance and more. With visual inspection, remote monitoring, predictive maintenance and more.

INTEGRATING TEAMS

Enabling engineers, operators and maintenance teams to monitor, maintain and manage installations, with an efficient and proven interplay of activities and professionalism.

CONNECT TECHNICIANS

Mobilise your workforce with in-depth knowledge and artificial intelligence (AI) and A/R support on the mobile platform to help them solve any problem, anytime, anywhere.



We automate process plants in different industrial sectors with a holistic, interdisciplinary or multidisciplinary method that is based on an interpretative method that conceives the technological solution as the product of a complex and mutual interaction between different advanced process control systems or SCADA solutions.



Next Pj
can therefore propose:

- Feasibility study
- Detailed Engineering
- Control System Schematic Diagram
 - Control logic
- Control system video page design
- PLC/DCS/SCADA configuration
- Marshalling and Cabinet Engineering
 - Wiring Diagram
- Staging and Factory Test (SAT and FAT)
 - Training
 - Field assistance



Management and Organization

MANAGE AND MONITOR YOUR INFRASTRUCTURE WITH AN INTEGRATED SUITE

Make the most of the power of artificial intelligence (AI) and IoT to help teams make decisions in real time with visual inspection, remote monitoring, predictive maintenance and more.

CONNECT TECHNICIANS

Mobilize your workforce with in-depth knowledge and artificial intelligence (AI) and P.S. [portable suite] support on the mobile platform to help them solve any problem, anytime, anywhere.

INTEGRATING TEAMS

Allow engineers, operators and maintenance teams to monitor, maintain and manage installations, with an efficient and proven interplay of activities and professionalism.

NextPJ

offers consulting services in OPP [OPERATION MANAGEMENT PROJECT] operations management, with the goal of improving performance and reducing production costs, and in MANUFACTURING DESIGN & CONSULTING, offering external support for project management, from DEFINITION OF SPECIFICATIONS AND OFFERING to project management and commissioning.

OTHER SERVICE



NEXT

Next pj

with **OPP** [OPERATION MANAGEMENT PROJECT] and with its fantastic project A&SI, we want to obtain the maximum results of **EFFICIENCY and COMPETITIVENESS** for our customers.

To achieve a result, we will take care for you of Cost reduction, Performance improvement Activities involved, Audit, KPI identification, Measurement and Analysis, Simulations and Tests, identifying saving, New standard definition and Monitoring and supporting change Cost reduction.

We anticipate and solve challenges relating to connection, control and optimization in the interaction between people, technology and processes with passion and enthusiasm.

We believe in the unlimited potential of technology to provide people with the tools they need to collaborate, transform their business and generate value within their organizations.

We are focused on creating innovative and reliable industrial solutions that can help individuals, teams and businesses of all sizes to achieve extraordinary results.

EFFICIENCY

Speed ↑

Quality ↑

Costs ↓



NEXT7

*7, Abagbon Odeku Street - Victoria Island - LAGOS
FEDERAL REPUBLIC OF NIGERIA
Phone: +234 09019706302 / 08092211112
info@nextpj.com www.nextpj.com*